

# Hot Adhesives and Over-laminates



## Adhesive Films **Hot** by LION

### Superbond **Hot** Dry Mount Tissue

Best for bonding paper to board.  $12\text{gm}^2 + 50\text{gm}^2 + 12\text{gm}^2 = 74\text{gm}^2$

- 9141 Superbond DMT 650mm x 25m
- 6767 Superbond DMT 650mm x 50m
- 6768 Superbond DMT 1040mm x 25m
- 6769 Superbond DMT 1040mm x 50m
- 6770 Superbond DMT 1300mm x 50m

PUB123



### Acid-free **Hot** Mount Film

Unique hot and transparent adhesive film 25μ.

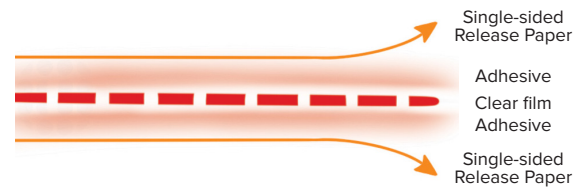
- 10751 Acid-free Hot Mount film 1040 mm x 25m



### Clear **Hot** Dry Mounting Film

The strongest hot adhesive film. Works well with DiBond, aluminium and canvas  $25\mu + 50\mu + 25\mu = 100\mu$

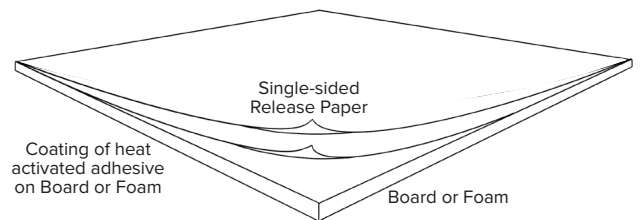
- 9583 DMF Clear 650mm x 25m
- 905 DMF Clear 1040mm x 25m
- 9584 DMF Clear 1300mm x 25m



### Adhesive **Hot** Mounting Boards from LION

Helpful for faster dry mounting

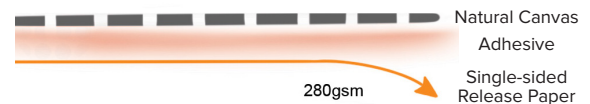
- 2690 1.25mm SpeedMount Dry-mount 1125mm x 815mm by *ColourMount*
- 10523 1.40mm Dry-mount on board 1020 x 810mm by *Kool Tack*
- 10524 2.5mm Dry-mount on board 1020 x 810mm by *Kool Tack*
- 10525 5.0mm Dry mount on foam board 1020 x 810mm by *Kool Tack*
- SAMP09 Hot Board Samples Pack



### Canvas **Hot** Adhesive Coated

Convenient when a customer wants canvas texture showing on a print.

- 6693 Adhesive Coated Canvas 1270mm x 10m roll 280gsm CLEARANCE



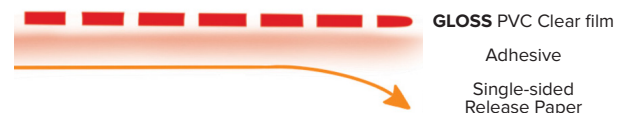
## Over-Laminating Films **Hot** by LION

Over-laminating a poster or picture, hot or cold, can replace glass. This reduces damage risk in public places. The frame will also be much lighter. The designation 'pp' means that the over-laminating film is pre-pierced to help air and moisture to escape during the heat process.

### GLOSS Clear Over-laminating film 75μ

PVC 50μ + 25μ = 75μ

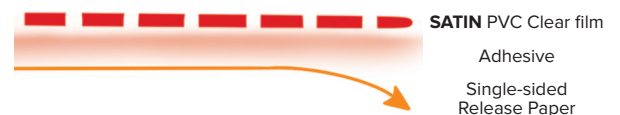
- 6812 Gloss clear film 1040mm x 25m pp



### SATIN Clear Over-laminating film 75μ

PVC 50μ + 25μ = 75μ

- 9587 Satin clear film 650mm x 25m pp
- 6816 Satin clear film 1040mm x 25m pp
- 9588 Satin clear film 1300mm x 25m pp



### MATT Clear Over-laminating film 100μ

PVC 50μ + 25μ = 75μ

- 6820 Matt clear film 1040mm x 25m pp



# Accessories for **Hot** Working

## Release Paper, release coating on one side

**9629** Silicone release paper, single sided 1240mm x 25m by LION

## Release Paper, release coating on both sides

**10737** Silicone release paper, double-sided 1240mm x 25m by LION

## Release Film, clear, release coating on both sides

Users often find that clear double-sided release film facilitates alignment of the workpiece, and that it can last longer than release papers. It is less prone to creasing.

**1906** Silicone release film double-sided 1070mm x 10m

**7833** Silicone release film double-sided 1070mm x 25m

**5828** Silicone release film double-sided 1300mm x 10m

**1907** Silicone release film double-sided 1300mm x 25m

## Accessories For **Hot** and/or **Cold** Working

**10754** Heavy Duty Snap-Off Knife 18mm KC1

**537** Snap Off Blades 18mm pack 10

**10755** Heavy Duty Utility Blade Knife

**10756** Folding Utility Blade Knife

**507** Stanley 50mm type #1991 Blades pack 100

**508** Stanley 60mm type #1992 Blades pack 100

**2907** Cutting mat A4 300 x 230mm 3mm

**2908** Cutting mat A3 450 x 300mm 3mm

**6343** Cutting mat A2 600 x 450mm 3mm

**10636** Cutting mat 1200 x 900mm 3mm Rhino

**10635** Cutting mat 1800 x 900mm 3mm Rhino

**4701** StaticWisk Anti-static brush 140mm

**380** Tacking Iron 240v Polished flat smooth tip

**924** Foam blanket 5mm 2000 x 1150mm, best for HGP vacuum presses

**922** Foam blanket 13mm 2000 x 1150mm, best on HGP to press the laminating film into the surface texture of the canvas

## Step-and-repeat with a flat-bed press

This procedure can allow work on items more than 24"x24" / 605 x 605mm. A **release board** which helps slide the large workpiece into the press. This is a sheet of MDF with a sheet of single-sided release paper dry-mounted to the smoothest side.

The square, edges of the heated platen can leave edge marks on over-size workpieces. To minimise that, source a sheet of flat and **smooth aluminium sheet** about 4"/100mm larger all round. Thickness should be 20g as a minimum and up to 4mm, depending on the budget. This sheet is placed over the workpiece and centrally under the heated platen.

## Dust Cover Cloths for Presses

For all cold or hot mounting, a dust free-free work area will help ensure quality work. Almost any dust-proof fabric will do. If it's for a hot press, only place it over the machine when it is switched off and cooled down. A tip for users of Hot Press HGP machines - leave it with the top down, but not latched tight.

## Technical Support & Training in **Hot** and **Cold** Mounting by LION

If you have a press the same or similar to any of those shown, the LION Tech Team will try to help you resolve any issues which may be prevent it being used. By appointment, they can also do refresher training. Email: [techserve@lionpic.co.uk](mailto:techserve@lionpic.co.uk)

The book **'The Mounting & Laminating Handbook'** by Chris Paschke CPF GCF, is truly the bible for all kinds of mounting; hot, cold and conservation. Just a couple of extra jobs will cover its cost. **3771**

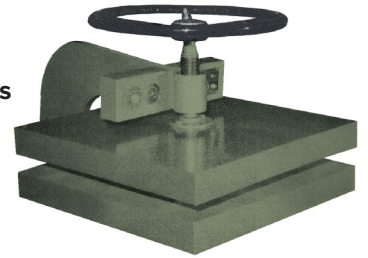
### Gas Heated

'Iron' press mounts photos 200 x 150mm / 8" x 6" in an album, using shellac coated tissue



### Flat-Bed Press

Often around 600 x 600mm / 24" x 24" Ideal for photos. Can step and repeat for larger prints.



### Mechanical Press

Typically 580 x 470mm / 22" x 18" and 860 x 660mm / 33" x 25"



### Hot Press HGP

Vacuum presses, HGP260 1194 x 890mm / 47" x 35" and HGP360 1689 x 1080 / 66" x 42"



### Hot Roller Presses

Lots of options, typically 1600mm / 62" wide and as long as needed

To see the LION **Cold** materials range read PUB122. Go to **6977** and click on Downloads

LION Picture Framing Supplies Ltd

148 Garrison Street, Birmingham B9 4BN

Tel: 0121 773 1230 [info@lionpic.co.uk](mailto:info@lionpic.co.uk)

Open 08.45 - 17.00 Monday to Friday

[lionpic.co.uk](http://lionpic.co.uk)

Product information updated October 2024



v.1 A09

p.2