

Hot Adhesives and Over-laminates

Adhesive Hot Films to use with Flat-bed, Mechanical and HGP Vacuum Heated Presses



PUB123

Superbond Hot Dry Mount Tissue

Best for bonding paper to board. $12\text{gm}^2 + 50\text{gm}^2 + 12\text{gm}^2 = 74\text{gm}^2$

9141	Superbond DMT 650mm x 25m	70°C to 115°C Working temperature
6767	Superbond DMT 650mm x 50m	“ “ “
6768	Superbond DMT 1040mm x 25m	“ “ “
6769	Superbond DMT 1040mm x 50m	“ “ “
6770	Superbond DMT 1300mm x 50m	“ “ “



Acid-free Hot Mount Film 4000

Unique hot and transparent adhesive film 25μ .

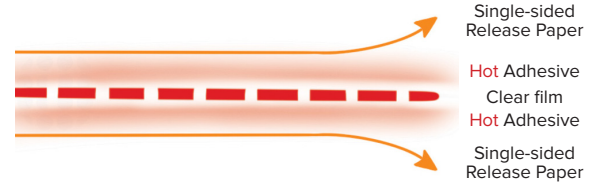
10751	Acid-free Hot Mount film 1040 mm x 25m	77°C to 88°C Working temperature
-------	--	----------------------------------



Clear Hot Dry Mounting Film

The strongest hot adhesive film. Works well with DiBond, aluminium and canvas $25\mu + 50\mu + 25\mu = 100\mu$

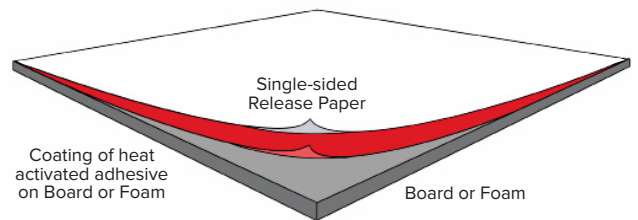
9583	DMF Clear 650mm x 25m	85°C to 99°C Working temperature
905	DMF Clear 1040mm x 25m	“ “ “
9584	DMF Clear 1300mm x 25m	“ “ “



Adhesive Hot Mounting Boards

Helpful for faster dry mounting

2690	1.25mm SpeedMount Dry-mount 1125mm x 815mm <i>by ColourMount</i>	80°C to 90°C Working temperature
10523	1.40mm Dry-mount on board 1020 x 810mm <i>by Kool Tack</i>	70°C to 80°C Working temperature
10524	2.5mm Dry-mount on board 1020 x 810mm <i>by Kool Tack</i>	70°C to 80°C Working temperature
10525	5.0mm Dry mount on foam board 1020 x 810mm <i>by Kool Tack</i>	70°C to 80°C Working temperature

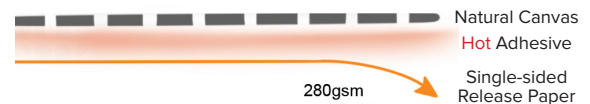


SAMP09 Hot Board Samples Pack

Canvas Hot Adhesive Coated

Convenient when a customer wants canvas texture showing on a print.

6693	Adhesive Coated Canvas 1270mm x 10m roll 280gsm	85°C to 99°C Working temperature
------	---	----------------------------------



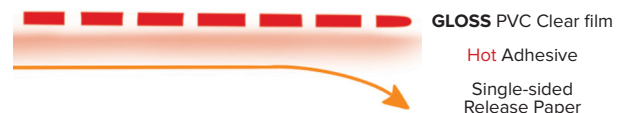
Over-Laminating Films Hot

Over-laminating a poster or picture, hot or cold, can replace glass. This reduces damage risk in public places. The frame will also be much lighter. The designation 'pp' means that the over-laminating film is pre-pierced to help air and moisture to escape during the heat process.

GLOSS Clear Hot Over-laminating film 75μ

PVC $50\mu + 25\mu = 75\mu$

6812	Gloss clear film 1040mm x 25m pp	85°C to 99°C Working temperature
------	----------------------------------	----------------------------------



SATIN Clear Hot Over-laminating film 75μ

PVC $50\mu + 25\mu = 75\mu$

9587	Satin clear film 650mm x 25m pp	85°C to 99°C Working temperature
6816	Satin clear film 1040mm x 25m pp	“ “ “
9588	Satin clear film 1300mm x 25m pp	“ “ “



MATT Clear Hot Over-laminating film 100μ

PVC $75\mu + 25\mu = 100\mu$

6820	Matt clear film 1040mm x 25m pp	85°C to 99°C Working temperature
------	---------------------------------	----------------------------------



Accessories for **Hot** Working

Release Paper, release coating on one side

9629 Silicone release paper, single sided 1240mm x 25m *by LION*

Release Paper, release coating on both sides

10737 Silicone release paper, double-sided 1240mm x 25m *by LION*

Release Film, clear, release coating on both sides

Users often find that clear double-sided release film facilitates alignment of the workpiece, and that it can last longer than release papers. It is less prone to creasing.

1906 Silicone release film double-sided 1070mm x 10m

7833 Silicone release film double-sided 1070mm x 25m

5828 Silicone release film double-sided 1300mm x 10m

1907 Silicone release film double-sided 1300mm x 25m

Accessories For **Hot** and/or **Cold** Working

10754 Heavy Duty Snap-Off Knife 18mm KC1

537 Snap Off Blades 18mm pack 10

10755 Heavy Duty Utility Blade Knife

10756 Folding Utility Blade Knife

507 Stanley 50mm type #1991 Blades pack 100

508 Stanley 60mm type #1992 Blades pack 100

2907 Cutting mat A4 300 x 230mm 3mm

2908 Cutting mat A3 450 x 300mm 3mm

6343 Cutting mat A2 600 x 450mm 3mm

10636 Cutting mat 1200 x 900mm 3mm *by Rhino*

10635 Cutting mat 1800 x 900mm 3mm *by Rhino*

4701 StaticWisk Anti-static brush 140mm

380 Tacking Iron 240v Polished flat smooth tip

924 Foam blanket 5mm 2000 x 1150mm, best for *HGP* vacuum presses

922 Foam blanket 13mm 2000 x 1150mm, best on *HGP* to press the laminating film into the surface texture of the canvas

Step-and-repeat with a flat-bed press

The square edges of the heated platen can leave edge marks on over-size workpieces. To minimise that, source a sheet of flat and **smooth aluminium sheet** about 4"/100mm larger all round. Thickness should be 20g as a minimum and up to 4mm, depending on the budget. This sheet is placed over the workpiece and centrally under the heated platen.

This procedure allows work on items more than 24"x24" / 605 x 605mm. A **release board** which helps slide the large workpiece into the press. This is a sheet of MDF with a sheet of single-sided release paper dry-mounted to the smoothest side.

Dust Cover Cloths for Presses

For all mounting, a dust free-free work area will help ensure quality work. Almost any dust-proof fabric will do. If it's for a hot press, only place it over the machine when it is switched off and cooled down. A tip for users of Hot Press HGP machines - leave it with the top down, but not latched tight.

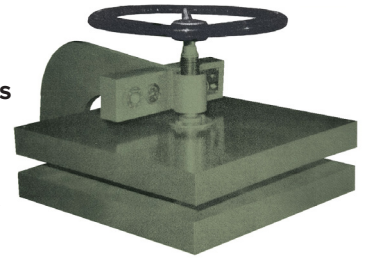
Gas Heated

'Iron' press mounts photos 200 x 150mm / 8" x 6" in an album, using shellac coated tissue



Flat-Bed Press

Often around 600 x 600mm / 24" x 24" Ideal for photos. Can step and repeat for larger prints.



Mechanical Press

Typically 580 x 470mm / 22" x 18" and 860 x 660mm / 33" x 25"



Hot Press HGP

Vacuum presses, HGP260 1194 x 890mm / 47" x 35" and HGP360 1689 x 1080 / 66" x 42"



Hot/ Warm/ Cold Roller Presses

Lots of options, typically 1600mm / 62" wide and as long as needed

Technical Support & Training in **Hot** and **Cold** Mounting by LION

If you have a press the same or similar to any of those shown, the LION Tech Team will try to help you resolve any issues which may be prevent it being used. By appointment, they can also do refresher training. Email: techserve@lionpic.co.uk

The book '**The Mounting & Laminating Handbook**' by Chris Paschke CPF GCF, is truly the bible for all kinds of mounting; hot, cold and conservation. Just a couple of extra jobs will cover its cost. **3771**

To see the LION **Cold** materials range read PUB122. Go to **6977** and click on Downloads

LION Picture Framing Supplies Ltd

148 Garrison Street, Birmingham B9 4BN

Tel: 0121 773 1230 info@lionpic.co.uk

Open 08.45 - 17.00 Monday to Thursday; 16.00 Friday

lionpic.co.uk

Product information updated January 2025



v.1 B01

p.2