

STAS multirail® 12V

bright picture hanging systems

PUB014

Y01



STAS quality and innovation

STAS picture hanging systems has proven itself to be the world's most innovative manufacturer of high-quality picture hanging systems. STAS only uses the best materials and closely controls every step of the production process. Our products have been awarded no less than 20 unique patents. The STAS smartspring was even awarded a gold medal at the Inventors' Convention in Geneva and the STAS cobra has won a Good Industrial Design Award. The STAS minirail won the 'Best Product Design Award for Decorative Accessories'. That is why STAS products are used all over the world in both family homes and in businesses, educational institutions, government buildings and the most prestigious museums and galleries.



product description STAS multirail 12V

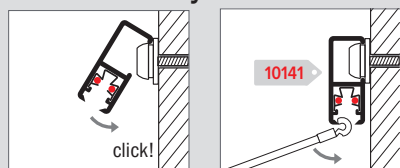
The STAS multirail system is a worldwide patented painting suspension system equipped with 12 volt wiring. This revolutionary system gives you a suspension system with an unprecedented number of possibilities.

You can hang paintings, postcards and posters in the blink of an eye. Easily moveable light fittings can be clicked anywhere you like on to the rail, for example to spotlight your wall decorations with LED or halogen lamps. But the STAS multirail goes further. Using the STAS powerline, digital panels and 12V LED televisions are also easy to connect to the STAS multirail. With the STAS multirail you can create the longest power socket in your house, office or elsewhere.

application

If you want a safe, multifunctional hanging system with integral 12V lighting, the STAS multirail system is your best choice. The STAS multirail attaches to the wall.

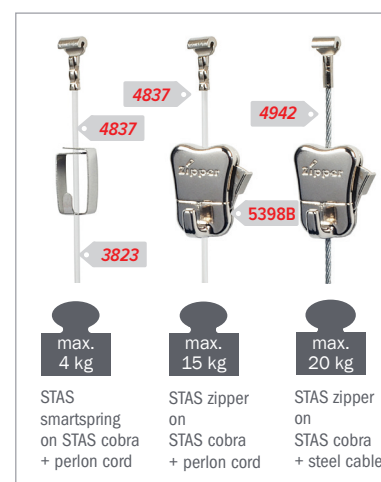
mount assembly



features

material	aluminium rail, 12V system (low-voltage supply)
colour	white or a natural aluminium
dimensions	11 x 28 mm
carrying loads	up to 45 kg per meter
option	powered by an 18W, 60W or 96W adapter

Refer to the installation demo on www.stasgroup.com or for more information call +31 (0)40 292 48 48



After selecting a rail, choose a cord to hook into the rail and a hook to slide over the cord to the desired height.

The cords and hooks on this page can be combined with all STAS rail types, with the exception of STAS j-rail, STAS j-rail max and STAS plastrail.

Cords



**STAS cobra
with perlon cord**
CP10110 100 cm
CP10115 150 cm
CP10120 200 cm
CP10125 250 cm

Ask	1.0m	-
4837	1.5m	10
4838	2.0m	10
4839	2.5m	10
5235	3.0m	10



**STAS cobra
with steel cable**
SC10110 100 cm
SC10115 150 cm
SC10120 200 cm
SC10125 250 cm

Ask	1.0m	-
4942	1.5m	10
6152	2.0m	10
6178	2.5m	10



**STAS cobra with
steel cable white**
SC10220 200 cm

7547 2.0m 10

**STAS cobra with
steel cable black**

7548 2.0m 10



Hooks



STAS smartspring
HA30900

3823B 20



STAS zipper
HA30501

5398B 20



STAS zipper pro
HA30530

9291B 20



Possible combinations



perlon cord +
smartspring

max.
4 kg



perlon cord +
zipper or zipper pro

max.
15 kg



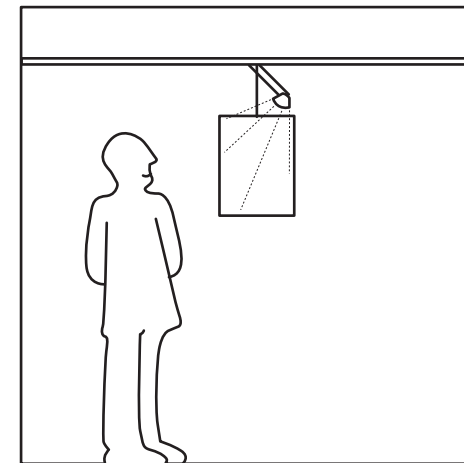
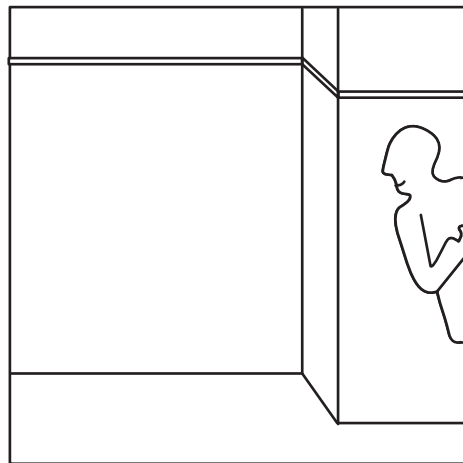
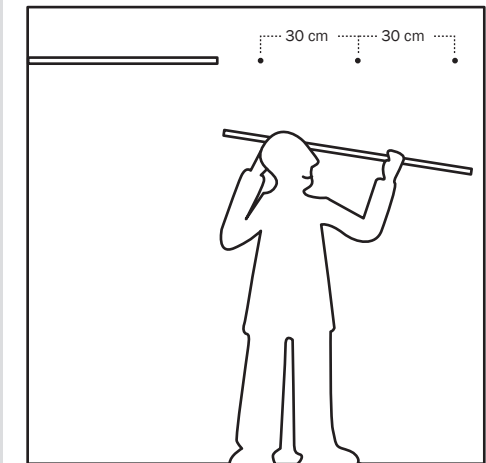
steel cable +
zipper or zipper pro

max.
20 kg

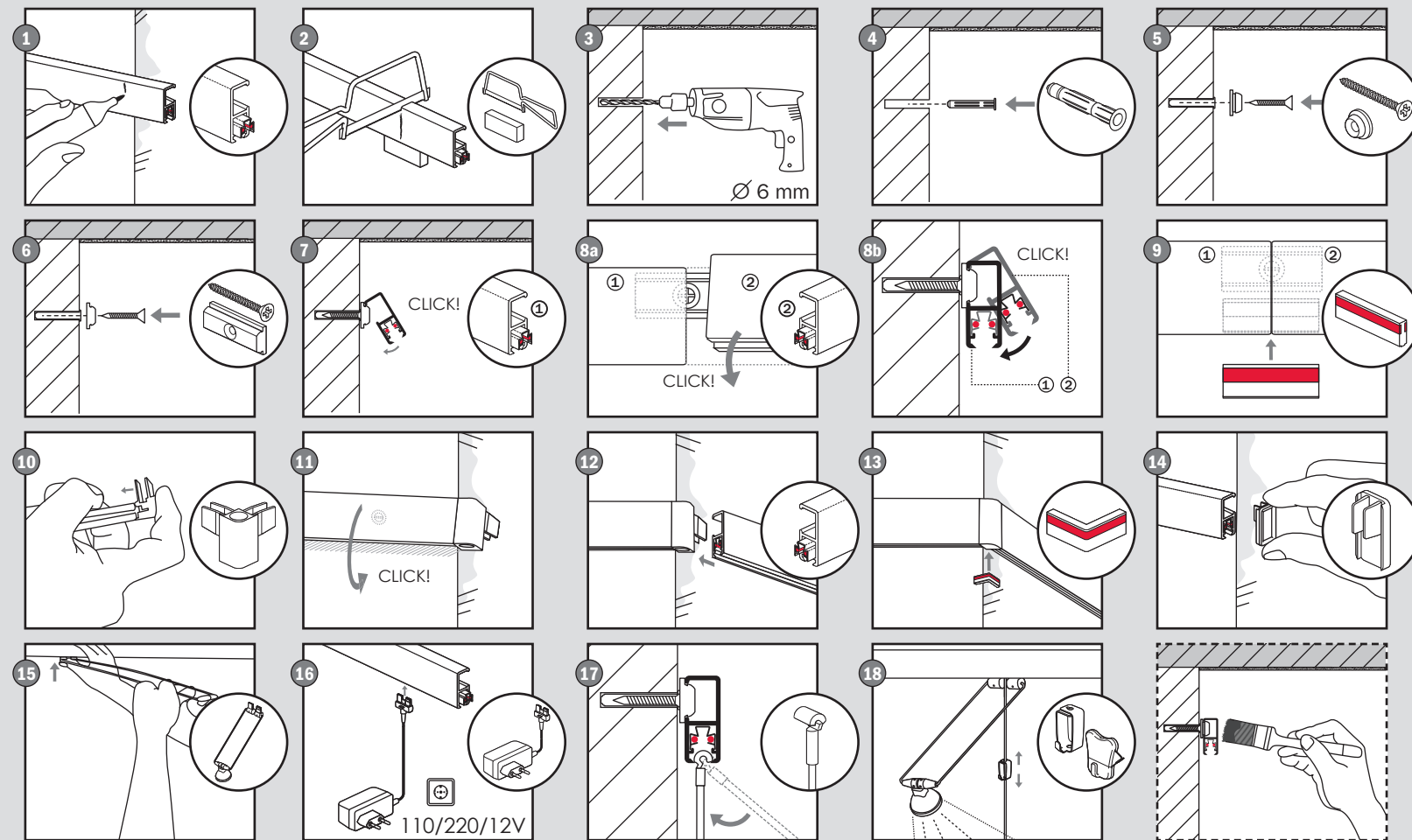


steel cable white or black +
zipper or zipper pro

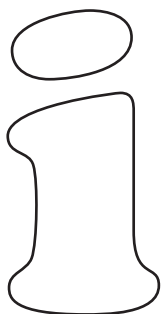
max.
10 kg



A vertical list of common hand tools. From top to bottom: a level with a bubble level and a '101' label; a cordless drill with a drill bit; a square; a dry-erase marker; a screwdriver; a pencil; and a tape measure.



 **STAS** armatures manual



STAS picture hanging systems



www.picturehangingsystems.com



www.youtube.com/user/STAShangingsystems



IMPORTANT SAFETY INSTRUCTIONS

Instructions for all STAS picture hanging systems pertaining to a risk of injury to persons

- Keep perlon cords and steel cables out of reach of children.
- Indoor use only.
- Do not use in humid areas.
- Do not make adjustments to the system.
- Always choose screws and plugs that are specifically suited for the respective material.

Extra instructions for all STAS picture hanging systems with 12 V system pertaining to a risk of fire, electric shock, exposure to excessive UV radiation, or injury to persons:

Caution: Before starting, turn off the power at the main circuit panel.

- The total wattage may never exceed the capacity of the transformer.
- Do not short-circuit the output terminals.
- Ensure the correct voltage is used as continuous excess voltage could damage your multirail system.
- The transformer cables may not be extended or shortened in any case.
- Turn off the system/unplug and allow to cool before replacing the bulb.
- Bulb and enclosure could get hot.
- Do not look directly at the lighted bulb.
- Keep hot bulb away from materials that may burn.
- MR11 – GU4 is the only suitable lamp for STAS armatures.
- Do not operate the unit with a missing or damaged bulb.
- Keep out of reach from children.
- Deviation from the assembly instructions may result in a risk of fire or electric shock.
- When using more than one adapter you need to create independent circuits. Make sure you never connect the rails with more than one adapter at a time! Otherwise this will result in a short circuit.
- Insert the wooden strip before sawing/shortening the rail to prevent damage to the power lines.
- Never make any adjustments to the system other than stated in this manual.
- Always use original STAS products, parts, lighting fixtures and (LED) lamps.

Disclaimer

This manual has been put together with great care. Nevertheless, the manual may still contain type-setting and/or printing errors. Obviously, STAS accepts no liability for errors of this nature. In conjunction with its policy of continual product improvement, STAS reserves the right to implement changes to the range, models, colours, etc. as and when circumstances make this necessary. Correct installation of STAS hanging systems is of essential importance. The installer must assess the strength of the walls or ceilings in the locations where the hanging systems are to be fitted, and the expected loads, and take account of and observe all relevant local regulations and legislation. If necessary, the installer must use fasteners that are more suitable for the task. The installer always has final responsibility for correct fitting, assessment of the walls or ceilings and the choice of fasteners. Maximum weights are indicated in the catalogue. STAS refuses all liability for improper use (including but not limited to not following the Safety Instructions) or when the products are subjected to a higher load than advised. STAS also refuses liability for direct, indirect or consequential damage arising from attachment to structures of insufficient strength, combinations with systems other than STAS picture hanging systems or unauthorised combinations of STAS picture hanging systems.

Warranty

STAS picture hanging systems guarantees the quality of the supplied hanging systems and the quality of the materials used. This warranty runs for a period of five (5) years from purchase of the hanging system and one (1) year for all STAS multirail 12 V components. Failure to comply with the cautions stated in this manual may affect your safety and will void your warranty.

Not covered under the terms of the warranty are defects arising which are attributable in whole or in part to incorrect installation or incorrect use of the system, other than mentioned in the manual. Should you wish to claim under the warranty, please contact your dealer. Please carefully retain your invoice with this warranty!

Your STAS dealer:

STASMUSA Y01

More info and prices on any of the part numbers in red at: lionpic.co.uk

