

# STAS u-rail

## suspended ceiling becomes hanging system

PUB047/1



STAS u-rail is specially designed for suspended ceilings. The rail is easily and almost invisibly attached to the supporting edge trim of the suspended ceiling.

STAS u-rail is also ideally suited for hanging whiteboards, billboards or large maps. So now, with just a small modification, your suspended ceiling becomes a versatile picture hanging system, ideal for use in offices, schools and healthcare facilities.

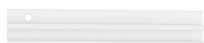


## Features



|                 |  |
|-----------------|--|
| Dimensions      | 14 x 6.5 mm                                  |
| Length          | 200 or 300 cm                                |
| Colour          | white, black or alu (to match the edge trim) |
| Material        | aluminium                                    |
| Installation    | ceiling mountable                            |
| Weight capacity | 20 kg/m                                      |
| Warranty        | 5 years                                      |

## Parts



**STAS u-rail white**  
RP10120 200 cm  
RP10130 300 cm  
(8 holes per m<sup>2</sup>)

10146 1 x 2.0m



**STAS u-rail alu**  
RP30120 200 cm  
RP30130 300 cm  
(8 holes per m<sup>2</sup>)

10145 1 x 2.0m



**STAS u-rail black**  
RP20120 200 cm  
RP20130 300 cm  
(8 holes per m<sup>2</sup>)

10144 1 x 2.0m



**STAS u-rail screw white**  
SP10100

Ask



**STAS u-rail screw alu**  
SP30100

Ask



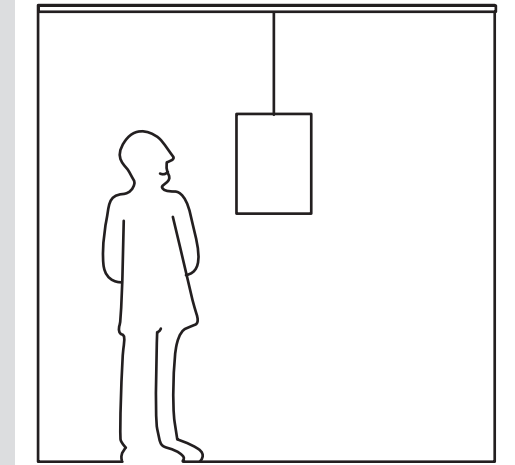
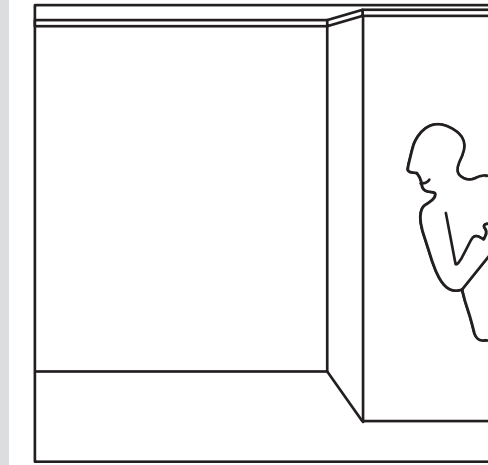
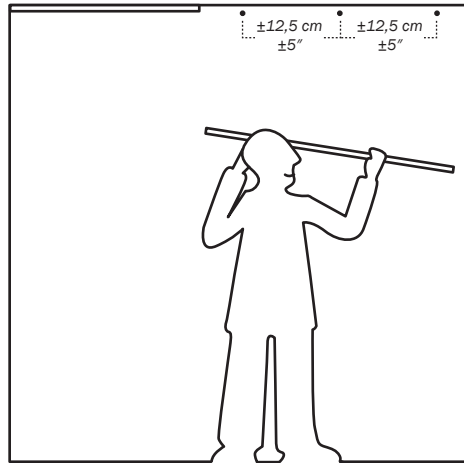
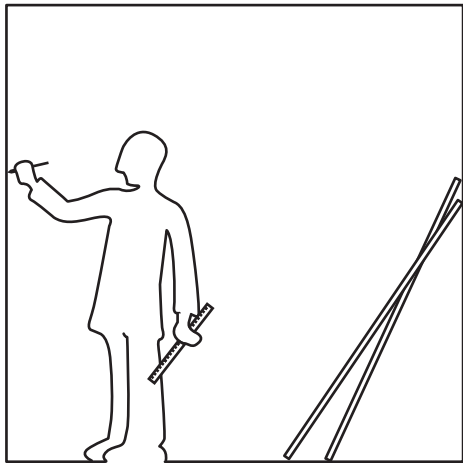
**STAS u-rail screw black**  
SP20100

Ask

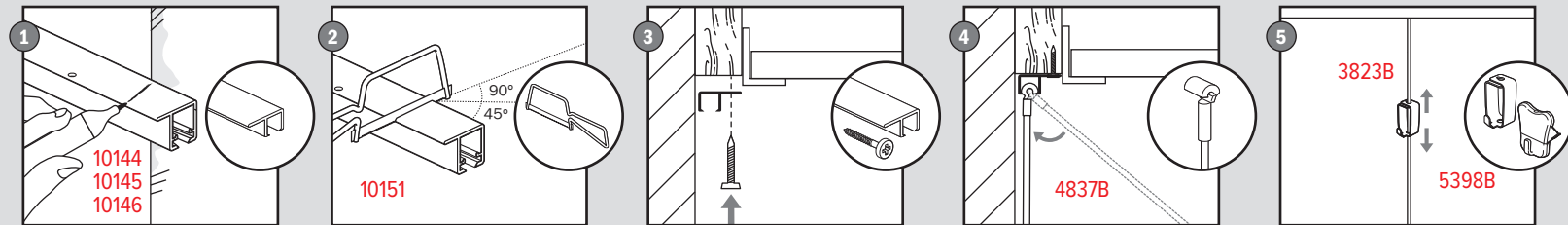
More info and prices on any of the part numbers in red at: [lionpic.co.uk](http://lionpic.co.uk)

Z07





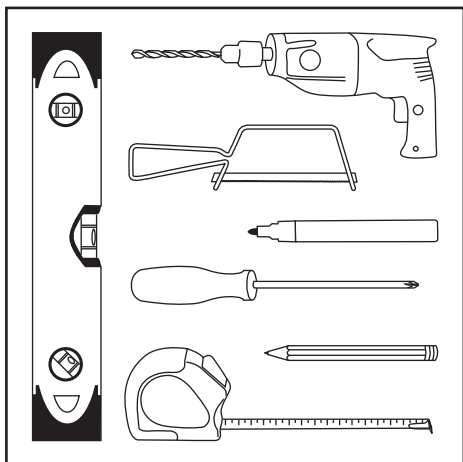
## STAS u-rail manual



[www.picturehangingsystems.com](http://www.picturehangingsystems.com)



[www.youtube.com/user/STAShangingsystems](http://www.youtube.com/user/STAShangingsystems)



More info and prices on any of the part numbers in red at: [lionpic.co.uk](http://lionpic.co.uk)

Z07



PUB047/2

# STAS hooks and cords

PUB047/3

After selecting a rail, choose a cord to hook into the rail and a hook to slide over the cord to the desired height.

The cords and hooks on this page can be combined with all STAS rail types, with the exception of STAS j-rail, STAS j-rail max and STAS plastrail.

## Cords / Cobra Suspenders



Translucent

### STAS cobra with perlon cord

CP10110 100 cm  
CP10115 150 cm  
CP10120 200 cm  
CP10125 250 cm

| Ask   | 1.0m | -  |
|-------|------|----|
| 4837B | 1.5m | 20 |
| 4838B | 2.0m | 20 |
| 4839B | 2.5m | 20 |
| 5235B | 3.0m | 20 |



Silver

### STAS cobra with steel cable

SC10110 100 cm  
SC10115 150 cm  
SC10120 200 cm  
SC10125 250 cm

| Ask   | 1.0m | -  |
|-------|------|----|
| 4942B | 1.5m | 20 |
| 6152B | 2.0m | 20 |
| 6178B | 2.5m | 20 |



### STAS cobra with steel cable white

SC10220 200 cm

### STAS cobra with steel cable black

|      |      |    |
|------|------|----|
| 7548 | 2.0m | 10 |
|------|------|----|



## Hooks



### STAS smartspring HA30900

|       |    |
|-------|----|
| 3823B | 20 |
|-------|----|



### STAS zipper HA30501

|       |    |
|-------|----|
| 5398B | 20 |
|-------|----|



### STAS zipper pro HA30530

|       |    |
|-------|----|
| 9291B | 20 |
|-------|----|

## Possible combinations



perlon cord +  
smartspring



perlon cord +  
zipper or zipper pro



steel cable +  
zipper or zipper pro



steel cable black +  
zipper or zipper pro