

SNAPTOGGLE®

HEAVY-DUTY HOLLOW-WALL ANCHOR

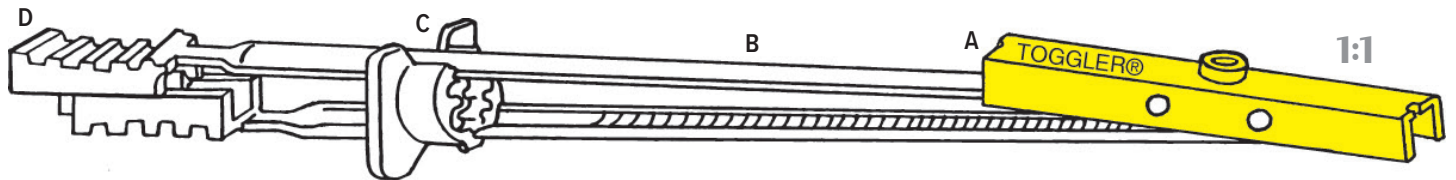
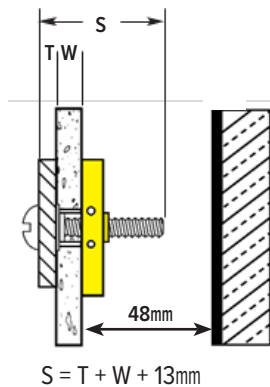
For Heavy picture frames, Mirrors, TV mounts, Lighting fixtures, Partitions, Cabinets • Shelving • etc

SNAPTOGGLE is a heavy-duty hollow wall anchor for use in walls and ceilings of materials such as gypsum board, drywall with steel or wood studs, tile over drywall, etc.

SNAPTOGGLE comes ready for use. The ratcheting strap / locking cap assembly positions the steel channel flush against the rear of the wall. The cap slides down the straps to lock flush into the front of the wall. The straps on are then easily snapped off by hand flush with the surface of the wall.

An M5 screw goes through the cap and into the threaded hole in the channel.

- Hand engage the thread of the screw into channel before using screwdriver to avoid cross threading the bolt.
- For maximum shear holding, orient channels vertically.
- Enlarging 13mm insertion hole size will reduce anchor strength.



- A = Steel anchoring channel - zinc-plated
B = Straps - low-impact polystyrene
C = Locking ratchet cap - polypropylene
D = Positioning handles - low-impact polystyrene

Benefits

- Tested to take loads up to 100kg, subject to wall material and condition
- Pre-assembled and ready for immediate use
- Pre-installs without the fixture or a screw
- Installs through a 13mm hole
- Automatically adjusts to thickness of wall or ceiling
- Does not spin - you can use electric screwdriver
- Does not fall behind wall when bolt is removed; fixture can be removed and reinstalled as often as desired
- Holding strength varies directly with the strength and condition of the substrate.

Specification - SNAPTOGGLE BM5

M5 machine screw thread to match thread in metal channel.

Minimum screw length is: Thickness of wall or ceiling + thickness of item being fastened + 13mm.

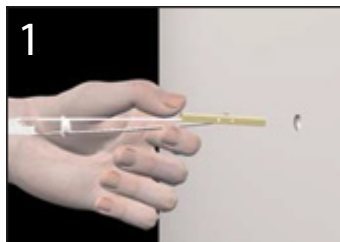
Minimum clearance behind wall: 48mm

Minimum wall thickness: 12mm, max 92mm

Supplied with 50mm pan head M5 screws. Other screw lengths and head types should be sourced locally.

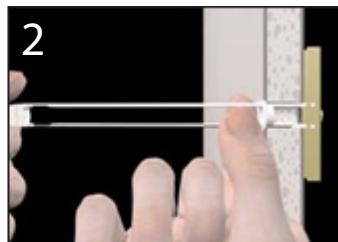
7762 Snaptoggle BM5 + 50mm screws 10

SNAPTOGGLE® Installation

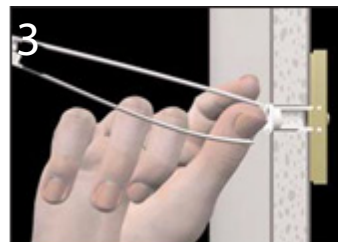


Drill appropriate size hole. Hold metal channel flat alongside plastic straps & slide channel through the hole.

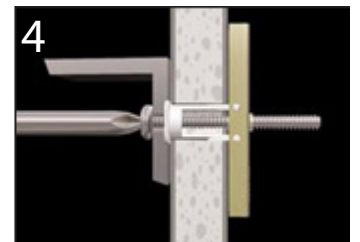
Minimum clearance behind wall: only 48mm.



Hold ends of straps together between thumb & forefinger and pull toward you until channel rests behind wall. Ratchet cap along straps with other hand until flange of cap is flush with wall.



Place thumb between straps at wall. Push thumb side to side, snapping off straps level with flange of cap.



Place item over flange. Insert M5 bolt and tighten until snug against item, then stop. Use M5 machine screw or bolt locally to match thread in metal channel.

LION Picture Framing Supplies Ltd

148 Garrison Street, Birmingham B9 4BN

Tel: 0121 773 1230 info@lionpic.co.uk

Open 08.45 - 17.00 Monday to Friday

lionpic.co.uk

Information correct as at May 2022. Please check website before ordering.

