

# STAS cliprail<sup>®</sup>pro

## picture hanging systems

PUB013/1



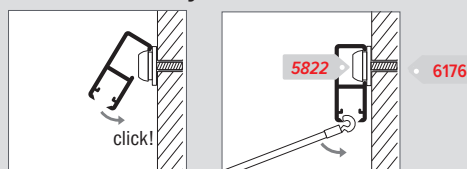
### product description **STAS cliprail pro**

The STAS cliprail pro system is a hanging system that features a heavy-duty rail for loads of up to 45 kg per linear meter. Even so, the rail design is compact and looks very attractive in living rooms as well as in professional environments.

### application

The thick-walled and massively strong rail makes the STAS cliprail pro system an ideal solution when heavier works of art need to be hung on a system that still looks elegant and attractive.

### mount assembly

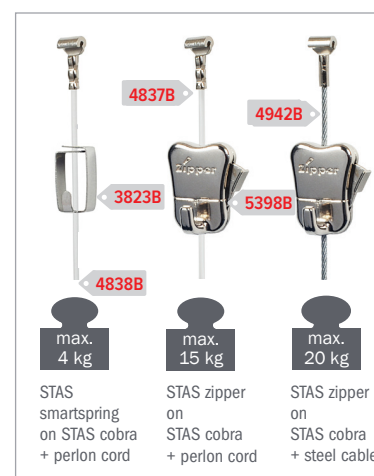


### features

material	aluminium rail
colour	white or a natural aluminium
dimensions	11 x 28 mm
carrying loads	up to 45 kg per meter

### STAS quality and innovation

STAS picture hanging systems has proven itself to be the world's most innovative manufacturer of high-quality picture hanging systems. STAS only uses the best materials and closely controls every step of the production process. Our products have been awarded no less than 20 unique patents. The STAS smartspring was even awarded a gold medal at the Inventors' Convention in Geneva and the STAS cobra has won a Good Industrial Design Award. The STAS minirail won the 'Best Product Design Award for Decorative Accessories'. That is why STAS products are used all over the world in both family homes and in businesses, educational institutions, government buildings and the most prestigious museums and galleries.



# STAS hooks and cords

PUB013/2

After selecting a rail, choose a cord to hook into the rail and a hook to slide over the cord to the desired height.

The cords and hooks on this page can be combined with all STAS rail types, with the exception of STAS j-rail, STAS j-rail max and STAS plastrail.

## Cords / Cobra Suspenders



Translucent

### STAS cobra with perlon cord

CP10110 100 cm  
CP10115 150 cm  
CP10120 200 cm  
CP10125 250 cm

Ask	1.0m	-
4837B	1.5m	20
4838B	2.0m	20
4839B	2.5m	20
5235B	3.0m	20



Silver

### STAS cobra with steel cable

SC10110 100 cm  
SC10115 150 cm  
SC10120 200 cm  
SC10125 250 cm

Ask	1.0m	-
4942B	1.5m	20
6152B	2.0m	20
6178B	2.5m	20



### STAS cobra with steel cable white

SC10220 200 cm

### STAS cobra with steel cable black

7548	2.0m	10
------	------	----



## Hooks



### STAS smartspring HA30900

3823B	20
-------	----



### STAS zipper HA30501

5398B	20
-------	----



### STAS zipper pro HA30530

9291B	20
-------	----

## Possible combinations



3823B

4838B



perlon cord +  
smartspring



5398B

4838B



perlon cord +  
zipper or zipper pro



9291B

6152B



steel cable +  
zipper or zipper pro



9291B

4838B

5398B



steel cable black +  
zipper or zipper pro



# STAS cliprail pro

## elegant powerhouse

PUB013/3



STAS cliprail pro is ideal for hanging heavier objects on walls thanks to its thick-walled profile. This rail can carry an amazing 45 kg per linear metre.

Despite its large weight-bearing capacity, the STAS cliprail pro is an elegant, unobtrusive rail that can be used in professional environments as well as in the home.

STAS cliprail pro owes its name to the specially designed fastening clip - the STAS railclip - which allows easy fixation to the wall.

More info and prices on any of the part numbers in red at: [lionpic.co.uk](http://lionpic.co.uk)



## Features



Dimensions	11.3 x 28 mm
Length	200 or 300 cm
Colour	white or alu (more colours on request)
Material	aluminium
Installation	wall mountable, not adjoining to ceiling
Weight capacity	45 kg/m
Warranty	5 years

## Parts



**STAS cliprail pro white**  
VC10200 200 cm  
VC10300 300 cm

10133	2.0m	1
10134	3.0m	1



**STAS cliprail pro**  
VC30200 200 cm  
VC30300 300 cm



**STAS cliprail pro**  
end cap white  
VE10200

10215	10
-------	----



**STAS cliprail pro**  
end cap alu  
VE30200

10213	5
-------	---



**STAS cliprail pro**  
corner cap white  
VD10400

10211	5
-------	---



**STAS cliprail pro**  
corner cap alu  
VD30400

10209	5
-------	---



**STAS railclip**  
RD40100  
(metal, 3 per m)

5822	10
------	----



**STAS rail connector**  
RD40200  
(metal)

10220	10
-------	----



**STAS screw**  
SR30100  
4mm x 40mm

6176	10
------	----

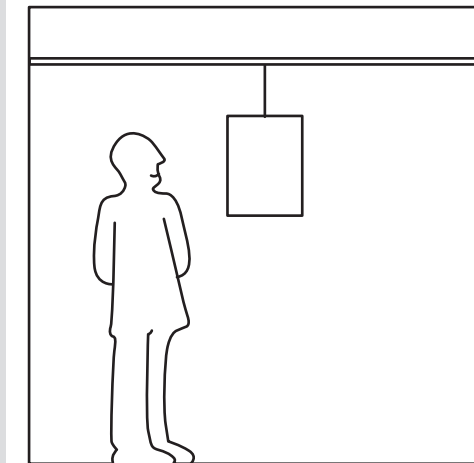
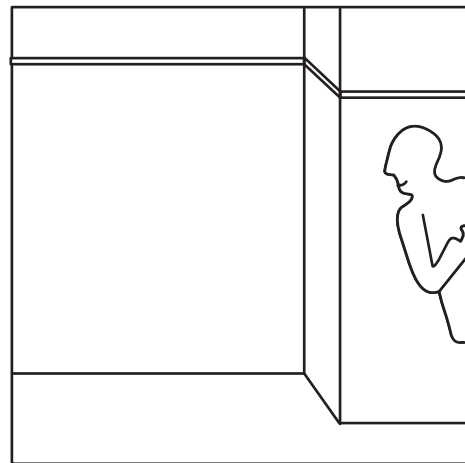
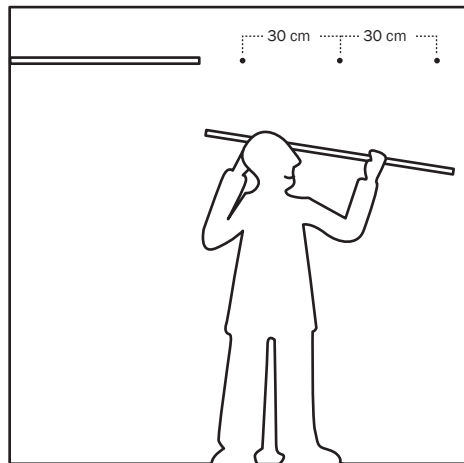
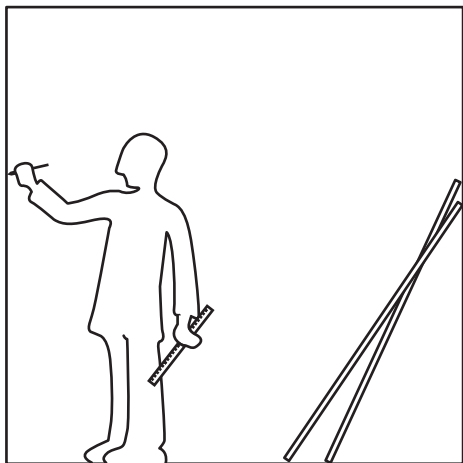


**STAS plug**  
SR50700

6177	10
------	----

Z07



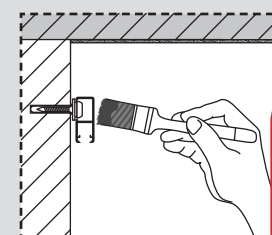
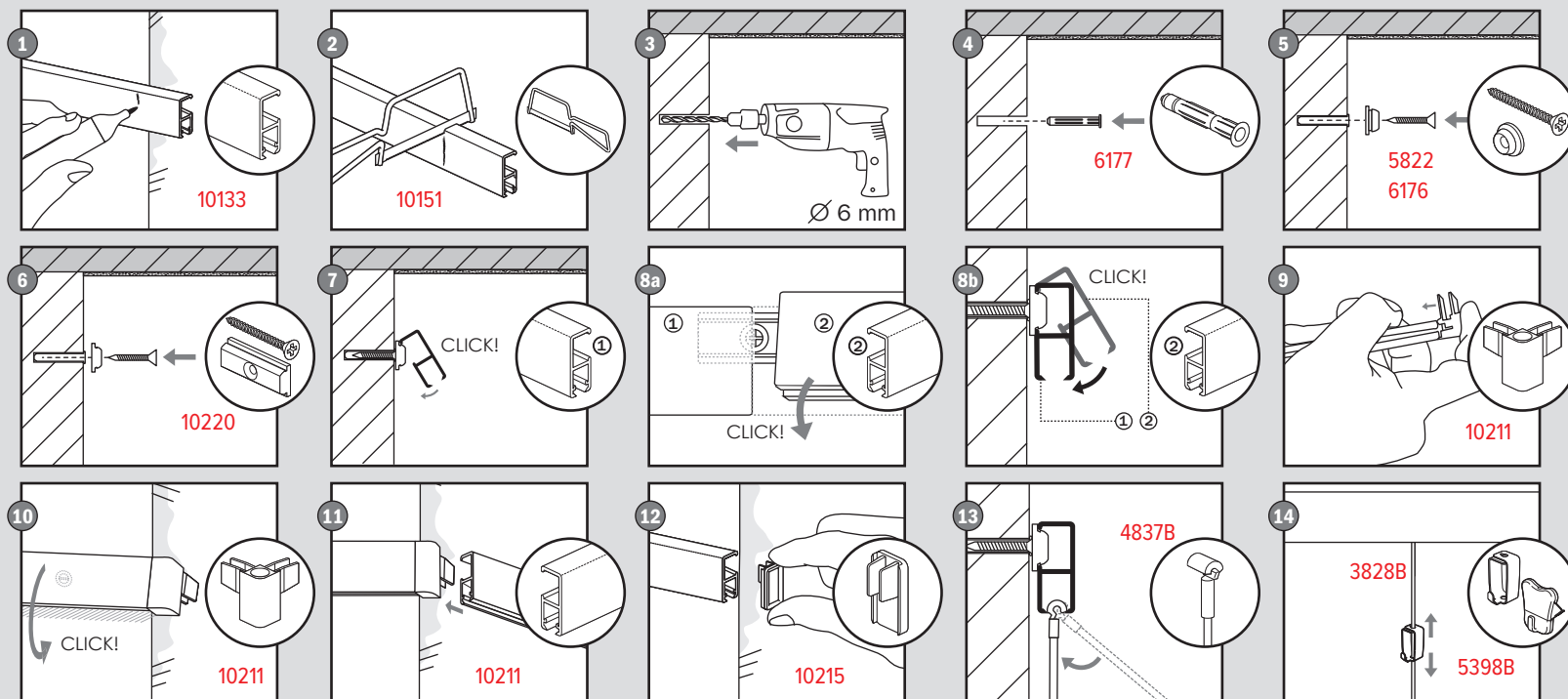
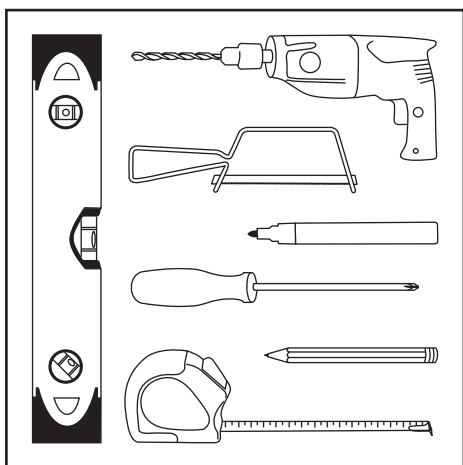


## STAS cliprail pro manual

Eindhoven - The Netherlands

[www.stasgroup.com](http://www.stasgroup.com)

 : [www.stasgroup.com](http://www.stasgroup.com) + YouTube



More info and prices on any of the part numbers in red at: [lionpic.co.uk](http://lionpic.co.uk)

Z07



PUB013/4